


Figure 1 – D3 Database for Lotus Notes to Exchange migration

BPOS Database Driven Deployment - Notes



Import **Migrate** **Reports**

Source

AD Identity BlackBerry Legal Hold

Notes WinMobile LDAP

Locations

Locations

Schedules


Import Schedule

LocationName: Export Location Schedule

The screenshot shows a web interface for 'BPOS Database Driven Deployment - Notes'. It features a navigation bar with 'Import', 'Migrate', and 'Reports' tabs. The main content is organized into three sections: 'Source', 'Locations', and 'Schedules'. The 'Source' section contains buttons for 'AD Identity', 'BlackBerry', 'Legal Hold', 'Notes', 'WinMobile', and 'LDAP'. The 'Locations' section has a 'Locations' button. The 'Schedules' section includes an 'Import Schedule' button, a 'LocationName' dropdown menu, and an 'Export Location Schedule' button. A 'D3' logo is visible in the top right corner.

Figure 2 – D3 Database for Exchange to Exchange migration

BPOS Database Driven Deployment - Exchange



Import **Migrate** **Reports**

Source

AD Identity BlackBerry Legal Hold

Exchange WinMobile LDAP

Locations

Locations

Schedules

Import Schedule

LocationName: Export Location Schedule

The screenshot shows a web interface for 'BPOS Database Driven Deployment - Exchange'. It features a navigation bar with 'Import', 'Migrate', and 'Reports' tabs. The main content is organized into three sections: 'Source', 'Locations', and 'Schedules'. The 'Source' section contains buttons for 'AD Identity', 'BlackBerry', 'Legal Hold', 'Exchange', 'WinMobile', and 'LDAP'. The 'Locations' section has a 'Locations' button. The 'Schedules' section includes an 'Import Schedule' button, a 'LocationName' dropdown menu, and an 'Export Location Schedule' button. A 'D3' logo is visible in the top right corner.

Figure 3 – Online Services Deployment Toolkit – Detailed Task Lists

Online Services Deployment Toolkit



Detailed Task List

Prepared for: XYZ Corporation

Figure 4 – Project Plan for Microsoft Cloud Migration

	Outline Number	Outl Level	Task Mode	Task Name
1	1	1		+ Milestones - MSO & Customer
7	2	1		+ Assess
187	3	1		+ Plan
553	4	1		+ Build
769	5	1		+ Stabilize
893	6	1		- Migrate
894	6.1	2		+ Prepare Deployment
929	6.2	2		+ Schedule Deployments
945	6.3	2		+ Execute Migration Communication Plan
956	6.4	2		+ Implement Training Plans
976	6.5	2		+ Deployment Day
1011	6.6	2		+ Go-Live Day
1031	6.7	2		+ Transition to Steady State
1037	7	1		- Closeout
1038	7.1	2		+ Legacy Mail Environment
1041	7.2	2		+ Infrastructure Remediation

Figure 5 – Test Plan

E-mail		OWA
Test Name	Pass/Fail	Status
Client Basics		IE Browser N
Client Install		
Install Outlook 2007 image with DOW settings	p	
Check OCS/Live Meeting plug-in installs correctly	p	
Client Configuration		
Test Autodiscover	p	
Mail		
Compose a New Email	p	
Compose a New Email & Send to Notes, Use delivery and read receipt.	p	Sent to Christina Shiu (non-emp Notes user) Delivery Notification Failure Received Read Notification
Compose a New Email & Send to US Outlook user. Use delivery and read receipt.	p	Sent to Mary Basic (non-emp Outlook user) Delivery Notification Successful
Compose a New Email & Send to DOW Global Outlook user. Use delivery and read receipt.	p	
Compose a New Email & Send to DOW Partner user. Use delivery and read receipt.	p	Sent to Murali Sunkara at HAVI Global Solutions Delivery Notification Failure
Compose a New Email & Send to DistList	p	
Compose a New Email & Send to External user. Use delivery and read receipt.	f	Sent to Self at gmail personal Account Successfully delivery, but received Delivery Notification Failure Successfully received & notified (notification sent to Junk Folder)
Test reply to above.	p	
Compose a New Email & Send to US Outlook user (add attachment). Use delivery and read receipt.	p	Sent to Sausan Yasji
Compose a New Email & Send to DOW Global Outlook user (add attachment). Use delivery and read receipt.	p	
Compose a New Email & Send to External user (add attachment). Use delivery and read receipt.	p	
Test reply to above.	p	
Read email (no attachment)	p	

Figure 6 – Swim Lane Process Flow Chart

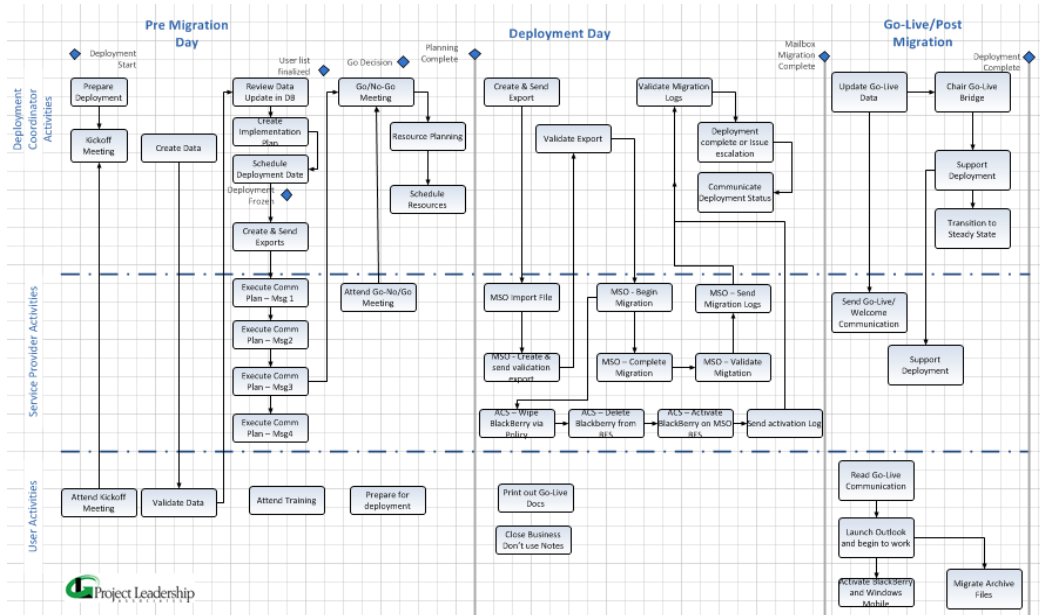



Figure 7 – Roles and RACI Matrix

Roles and RACI Matrix
 BPOS Deployment Project



Section	Site Deployment Lead	Technical Lead	Service Desk Lead	Deployment Coordinator	Site P. Unit. of Contact	Microsoft Project Manager	Microsoft Technical Lead	Identity AD Lead	Messaging Lead	Legal Hold P. Unit. of Contact	Operations Lead	BlackBerry Mgmt
Assess												
Project Logistics	2.1	A	R	C	C	C						
General BPOS Requirements	2.2	A	R				C					
Migration Database Requirements	2.3	A			R	C		C	C	C	C	
Lotus Notes Migration Requirements	2.4	A	R		I			C				x
Local Exchange Migration Requirements	2.5	A	R		I			C				x
Review current spam \ virus protection	2.6	A	R							C		
Legal \ Security Requirements	2.7	A	R						C			
BlackBerry \ BES Requirements	2.8	A	R		I		C	C		C		
Windows Mobile Provisioning	2.9	A	R		I		C	C		C		
Plan												
Create Rollout Strategy	3.1	A, R										
Bandwidth Planning	3.2	A	R							C		
Lotus Notes Migration Planning	3.3	A	R		I			C			x	